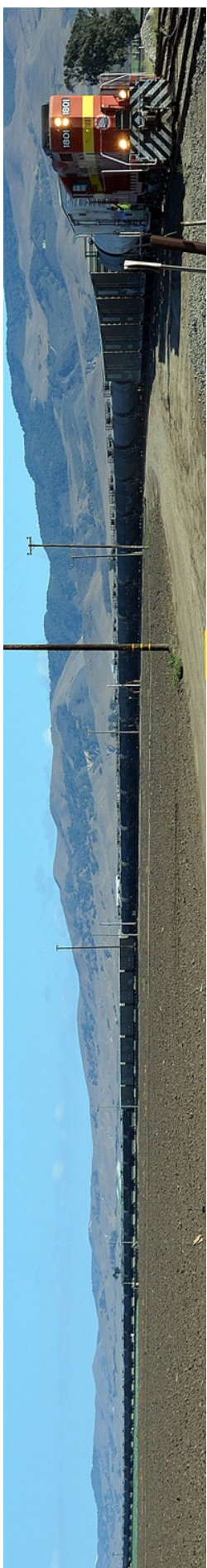


Friends of the Santa Maria Valley Railroad

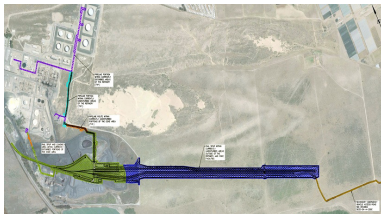


**60-car Record Breaker**

SMV's 60-car outbound train on July 17, 2014 was the longest manifest train to run on the SMV system since the sugar mill shut down in the early 1990s.

**Phillips 66 Rail Expansion Project**

On September 18, 2014, Jim Anderson, Superintendent of Maintenance for Phillips 66, talked about the rail expansion project at the Phillips 66 Refinery located on the Nipomo Mesa. Jim talked about where the oil is coming from and the overall trend of decreased availability of local crude oil and the need to utilize rail to supplement the decreasing supply of local crude oil. Included in the presentation were layout plans to expand their track to accommodate 80-car unit trains of tank cars. This program was held at the Santa Maria Public Library's Shepard Hall.



**Membership Updates**

**New Members**

**Basic**

Harry Schade  
Stuart Young

**Renewing Members**

**Depot - Family**

Greg Benson  
Alice Simas & Michael Quinette  
William Baldwin  
Norman & Cheryl McDonald  
Steve and Debbie Shriver

**Gandy Dancer**

Mr. Edwin Woods, Jr.

**Engineer**

Kevin & Dini O'Roark

**Conductor**

Nancy Bull

**Trainmaster - Lifetime**

Nancy & Gordy Nungesser

**Friends of the**



**Santa Maria Valley Railroad**

**Coming Up...**

We've got activities planned...

**October 4, 2014**

**Excursion on the Overland Trail**

You will ride the immaculately restored Overland Trail as you enjoy the vistas along the Central Coast and relax in the luxurious lounge while being served complimentary coffee and soda. Several versions of this round-trip excursion from San Luis Obispo to Santa Barbara and back are available, as well as a lunch option to enjoy on the platform at the San Luis Obispo Railroad Museum. This is a joint event between Friends and the SLO Railroad Museum. All the details and how to register are on the SLO Railroad Museum's website: <http://SLORRM.com>.

**November 22, 2014**

**San Luis Obispo Railroad Museum Tour**

A private Friends tour will start at 10am and be done in time for lunch at Del Monte Cafe (right across the street) around noon. Bring lunch money. The Museum is located at 1940 Santa Barbara Avenue, San Luis Obispo, just south of the SLO Amtrak station. Friends Membership is required. There will be a special SMV Railroad presentation at the end. RSVP to [info@Friends-SMVRR.org](mailto:info@Friends-SMVRR.org) or 805-614-7093.



MU'd 70-tonners near Green Cyn trestle on May 29, 2014.

**Thanks to our Sponsors**

AgLand Properties  
Ed Sutti



of San Luis Obispo

**Sponsor Support**

The Santa Maria Valley Railroad is a sponsor of our newsletter and our quarterly programs. The Mortgage House is a sponsor of our meeting room for Friends Board Meetings. AgLand has supported Friends BBQs at the railroad's headquarters in Betteravia. We are always looking for sponsors to expand our programs and tours and fund educational activities.

### Summer BBQ - June 14, 2014

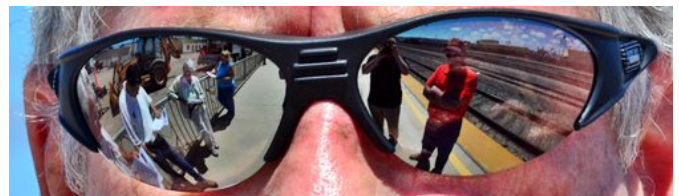
About 30 friends joined us at the railroad headquarters in Betteravia for a Santa Maria-style (tri-tip and chicken) Friends Fundraising BBQ Social from 11am to 2pm. Lunch also included salad, baked beans, grilled garlic bread, drinks, and dessert (chocolate cake!). We celebrated summer and the upgrades and updates to the Santa Maria Valley Railroad's locomotives! With the railroad getting busier and busier, there may not be too many more opportunities to get quite this close.

The day's activities included Kevin leading a group of Friends on his ever-popular tour of the Betteravia Town-site.



### Electrified Portion of the PCRY - August 23, 2014

A carload of us met at the corner of Battles and Depot to begin our tour led by the ever-capable Kevin. After distributing guide sheets to all of us, Kevin began pointing out all manner of tidbits still visible along the way from the days of the electric Pacific Coast Railway in the Santa Maria Valley. The tour focused on the electrified PCRY as it stood between 1906 and 1909. The PCRY eventually abandoned all lines south of San Luis Obispo in 1941.



Milepost 0.0 of the Guadalupe Branch of the Pacific Coast Railway

